

City

Design Project

Parallel Lines & Transversals



CCSS G-CO.09

Paper by Pixel Paper Prints

Frame by KpmDoodles

# City Design Project

You will design a city using your knowledge of parallel lines, transversals, and special angle pairs.

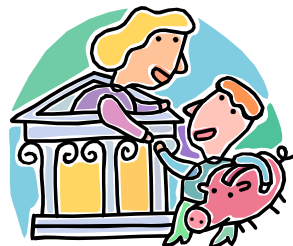
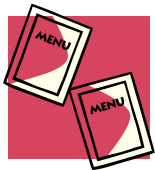


City Specifications (Each city should contain the following):

- 4 - 6 parallel streets
- 2 transversal streets
- Buildings:
  - A **Gas Station** and a **Restaurant** on **Alternate Exterior Angles**
  - A **House** and a **School** on **Consecutive Interior Angles (Same-Side Interior)**
  - A **Courthouse** and a **Bank** on **Vertical Angles**
  - A **Store** and a **Church** on **Corresponding Angles**
- Name your city, streets, and buildings
- Compass (North, South, East, West)

Your city should be created on unlined paper (computer paper, cardstock, poster board, etc.)

Be creative! Use colored pencils, markers, etc.



# City Design Project Rubric

Name: \_\_\_\_\_ Period: \_\_\_\_\_ Score: \_\_\_\_\_

Structure (5 points for each pair correctly placed)	Location (ex. - NW corner of Circle Blvd & Square Drive)
<i>Alternate Interior Angles</i> Gas Station	
Restaurant	
<i>Consecutive Interior angles</i> House	
School	
<i>Vertical angles</i> Courthouse	
Bank	
<i>Corresponding Angles</i> Store	
Church	

Correct Placement of Buildings \_\_\_\_\_ / 20 points

Correct Location of Buildings \_\_\_\_\_ / 8 points

Streets Drawn Correctly & All Features Named \_\_\_\_\_ / 3 points

Compass Drawn \_\_\_\_\_ / 2 points

Rubric Stapled to the Front of Map \_\_\_\_\_ / 1 point

Used Unlined Paper \_\_\_\_\_ / 1 point

Neatness (color, creativity, etc.) \_\_\_\_\_ / 5 points

Turned in on Time \_\_\_\_\_ / 5 points

**Total** \_\_\_\_\_ / 45 points

Thank you!!!

Thank you for purchasing this product. If you have any questions or suggestions please email me at [beccaleigh00@hotmail.com!](mailto:beccaleigh00@hotmail.com)



<http://www.teacherspayteachers.com/Store/Rebecca-Mann/Products>

<http://www.mannmath.blogspot.com>

